

An aerial photograph of a vineyard, showing rows of grapevines. The image is overlaid with several large, dark green, semi-transparent shapes that resemble stylized, overlapping leaves or abstract patterns. These shapes are layered over the vineyard, creating a sense of depth and texture. The overall color palette is dominated by various shades of green, from deep forest green to bright, sunlit yellow-green.

Having a weak link in your supply chain isn't a problem.
If you know where it lies.



It pays to have supply chain back-up plans. Providing you know what to back-up.

Accumulate

The outputs from SCAIR™ will enable you to quantify the wider impact of critical supply point failures across your portfolio of products or activities.

Mitigate

SCAIR™ enables a cost benefit analysis of the value of investing in contingency plans against the value at risk.

Can you afford not to?

Not only will you be protecting your balance sheet but also your reputation...

Keep pace and stay in control

Recent studies suggest that with the move towards globalisation, the concentration of manufacturing in certain geographical areas and the need to reduce working capital, supply chains are becoming stretched and less well controlled.

SCAIR™ will lead you towards the securing of your supply chains by enabling understanding and quantification of supply chain vulnerabilities.

Improved decision Making

The outputs from SCAIR™ will enable you understand vulnerable supply points. This will enable you to make value judgments to:

- More effectively manage stock or alternative sourcing arrangements to provide a level of risk that is acceptable to your business

- Respond appropriately and decisively to failures in your supply chain by having more robust contingency plans in place.
- Evaluate 'make or buy' decisions in full knowledge of the risks that you may be outsourcing. Avoid the assessment of criticality of outsourced activities by spend alone. Focus on the value at risk.

Corporate governance

... is an overhead. SCAIR™ will help you to demonstrate good corporate governance, generate a highly auditable contribution to your corporate risk register

Improved insurance cover

The rigor of the estimation process and the resulting risk profiles will provide the means to purchase wide ranging insurance cover.



In an increasingly global business environment,
maintaining continuity of supply is the key...

Identify

Understanding the value at risk at each point in your supply chain will enable you to identify your critical vulnerabilities.

Quantify

SCAIR™ guides you through a detailed analysis of your exposures and calculates the impact of single supply point failures on your bottom line.

How does it work?

SCAIR™ allows you to analyse your portfolio on a product by product basis. You draw your supply chain and build up the risk data for each supply point as you go.

The loss estimation is then calculated for each supply point and each product, and any cross product accumulations are calculated instantly.⁷³

Impact only predictions

SCAIR™ gives impact only loss estimates to allow you to prioritise the links in your supply chain that could hit your bottom line hardest. Probability is taken into account only in terms of the scenario that you chose to model i.e. worst case scenario or most credible worst case scenario, etc. SCAIR™ provides a snap shot of your chosen scenario, based on business forecasts.

Model a range of scenarios

SCAIR™ is designed to help you estimate the impact of serious incidents which result in significant interruption to product supply.

It's up to you to chose what threat scenario is most pertinent to your supply chains e.g. physical, commercial, regulatory. Particular attention should be paid to any common mode or systemic threats that could simultaneously have multiple impacts on your supply chain.

Initial risk management advice is available to help you to determine your focus.

What data do you need?

SCAIR™ will enable you to collect data from your business to estimate the effect on your bottom line, should you lose a critical supply point. The data you need exists as part of other critical processes such as forecasting, production planning, supplier management.

There are two main types:

- Product related data - sales, gross margin, stock policy
- Location specific - location details, activities, local stock, alternative sources.

SCAIR™ aims to break down the initial challenges of complexity by only asking for the minimum information possible to arrive at the first pass loss estimates. These will be refined through experience and future iteration.

What does it generate?

- Simple supply chain diagrams highlighting the difference between internal and external locations. Individual loss estimates for each supply chain points and portfolio wide accumulations.
- Summary reports showing the accumulated vulnerabilities of internal and external supply points across your portfolio.

Who will use it?

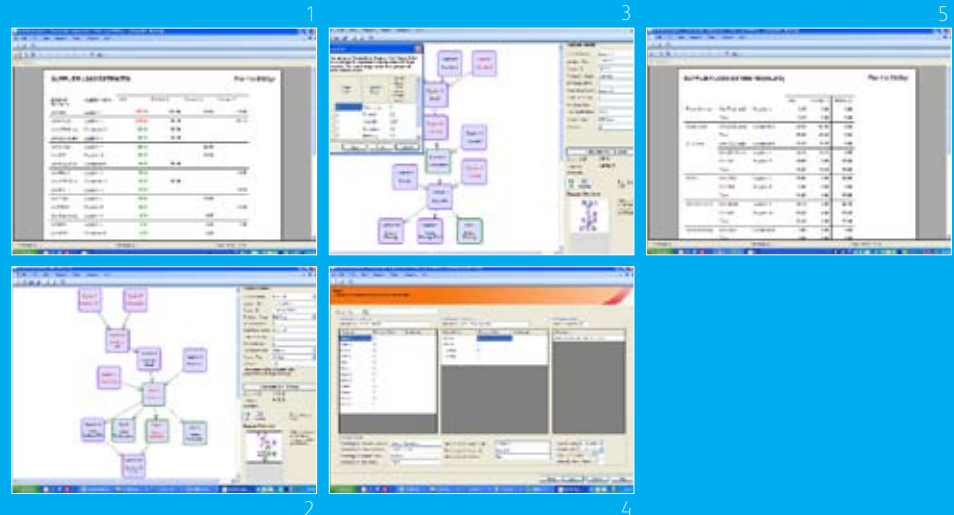
SCAIR™'s intuitive flowchart driven interface can be used by Risk and Supply Chain Professionals alike

Technical

- Developed using standard Windows technology including ASP.Net
- Compatible with Standard Desktop PC
- Tested with Microsoft Windows Vista 32, Windows XP and Windows 2000.
- Developed for Windows XP and Windows 2000 with standard Microsoft ASP.Net components.

Scair in action

- 1 Supplier report
- 2 Supply map
- 3 Map and product details
- 4 Scenario wizard
- 5 Parent product group report





Like hindsight, beforehand

“ I think the real benefit of SCAIR™ is that it is a simple and effective tool that helps to make sense of a complex area of risk, cutting down significantly on the amount of management time and expense required. ”
Chris Rigby-Smith of Jardine Lloyd Thompson

For more information contact:
InterSys Risk on **+44(0)845 0948925**
or visit **www.supplychain-risk.com**